



Acromet (Aust) Pty Ltd

14 Winterton Road, Clayton, Victoria 3168 • P O Box 1105, Clayton South, Vic 3169

Ph: +61 3 9544 7333 • Fax: +61 3 9543 6706 • Email: chemex@acromet.com.au

Suite 302, 63-79 Parramatta Road, Silverwater, NSW 2128

Ph: +61 2 9647 2432 • Fax: +61 3 9647 2599

www.acromet.com.au

1 – Presentation of the pump

Peristaltic pump BH series has a constant flow rate, available 22 l/h, 30 l/h, 40 l/h, 65 l/h and 100 l/h with Santoprene® and silicone tubing. The tube is fixed to the external fitting with a SS clamps. The cover is fixed on the casing with 3 screws, on it there is a groove for an additional shaft support. The hydraulic head is independent of the motor type and can be supplied separately.

2 – Technical data

TYPE	FLOW RATE ⁽¹⁾		WEIGHT kg	POWER SUPPLY Volt	POWER CONSUMPTION Watt	ROTATION SPEED 1' - rpm	TUBING SIZE mm
	l/h	g/min					
BH – 22	22	360	1.5	230 (50 Hz)	40	50	8.0 x 12.8
BH – 30	30	500	1.5		40	50	9.6 x 14.4
BH – 40	40	660	1.5		40	70	
BH – 65	65	1080	2.1		60	105	
BH – 100	100	1660	2.1		60	150	

Suction height: 2m

Discharge height: 10m

Tab. 1

⁽¹⁾ Circulation values refer to water, at room temperature, with a back pressure of 1 bar and a suction head of 1,5m.
Flow rate increasing at 60 Hz is 20%.

3 - Pump installation

- The pump should be installed away from heat source in a dry place with a maximum room temperature of 40°C. The minimum temperature depends upon the liquid which is to be dispensed which must always remain in its liquid state.
- Carefully observe the regulations in force as regards electrical installation (figure 1). **When the supply cable does not have the plug, the equipment should be connected to the power supply by means of a single-pole switch having a minimum distance of 3 mm between the contacts. Before accessing any of the electrical parts, make sure that all the supply circuits are open.**

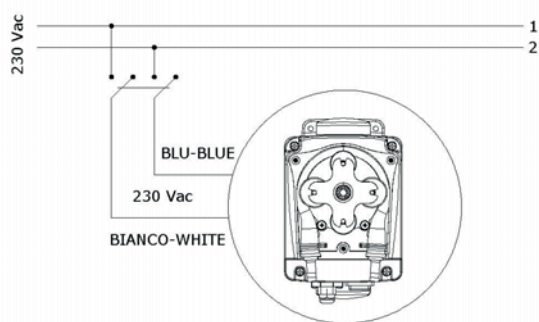


Fig. 1

Wires colours could be different from the ones showed in fig. 1, it depends of the motor type.

About the dc motors, please take care of the polarity to respect the rotation sense (clockwise).

Try to keep both the suction and delivery hose as straight as possible, avoiding all unnecessary bends.

3.1 Pannel mounting

The pump can be install in a panel, first user has to dismount the gear motor from the hydraulic head as shown in fig. 2.

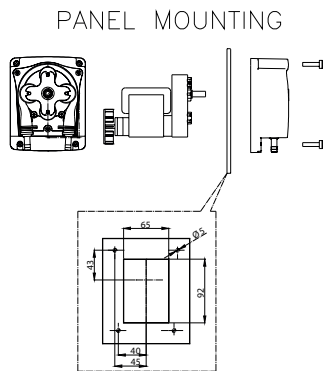


Fig. 2

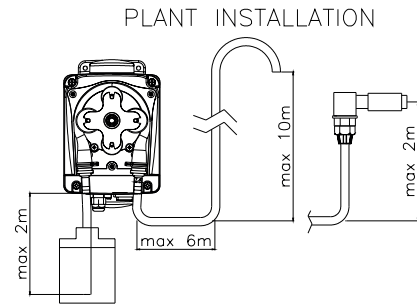


Fig. 3

3.2 – Materials in contact with the chemical dosed

Tubing: Santoprene® o Silicone

Fittings: polypropylene

4 – Maintenance

Check the level of the tank containing the solution which is to be dispensed, periodically, in order to avoid the pump running on empty. Even if the unit does not become damaged in this eventuality, it is recommended however, in order to avoid damage due to lack of additive in the unit. Check the operation of the pump and the integrity of the tube.

5 – Repairs and trouble-shooting

Make sure that the pump is completely disconnected from the power supply before undertaking any kind of repair. Given the robust nature of the pump, mechanical breakdowns in the true sense of the term are extremely unlikely. At times there may be liquid losses, general due to the slackening of a hose clamp or, more simply, a leaking hose. especially on the pump and discharge side; in this case, the defective parts have to be quickly replaced and once the leak has been eliminated

The pump doesn't introduce additive into the plant:

- a) check to see that the pumping tube integrity, the suction and discharge tubes have to be in good working conditions. Should there be swelling or deterioration of the tubes, check the chemical compatibility of the additive with the type of tube being used.
- b) Check both the filter and injection valve making sure they are not clogged (if present).

N.B. The operations shown above should only be carried out by qualified personnel. We cannot accept liability for any damage caused to people or things deriving from the lack of experience of the operator who performs these operations.

6 – Pump kit

Our peristaltic pumps may be supplied upon request with:

Suction/discharge tube in PVC flexible
Injection valve
Foot filter

7 - Further hints and warnings

- Please read the warning notice given in this section very carefully, because they provide important information regarding safety in installation, use and maintenance of the pump.
- Keep this manual in a safe place, so that it will always be available for further consultation.
- After unpacking the pump, make sure it is completely sound. In case of doubt, do not use the pump and contact qualified personnel. The packing material (especially bags made of plastic, polystyrene, etc.) should be kept out of the reach of children: they constitute potential sources of danger.
- Before you connect the pump, make sure that the voltage ratings, etc., correspond to your particular power supply. You will find these values on the rating plate attached to the pump.
- The pump should be used only for the purpose for which it has been expressly designed, namely the dosing of liquid additives. Any different use is to be considered improper and therefore dangerous. The makers cannot be held responsible for damage deriving from improper, erroneous or unreasonable use of the pump.
- Use of electrical equipment always implies observance of some basic rules: in particular:
 - 1 - do not touch the equipment with wet or damp hands or feet;
 - 2 - do not operate the pump with bare feet (example: swimming pool equipment);
 - 3 - do not leave the equipment exposed to the action of atmospheric agents;
 - 4 - do not allow the pump to be used without supervision by children or incompetent people;
- Before carrying out any maintenance or cleaning operation, disconnect the pump from the power supply by means of the circuit breaker.
- In case of breakdown or improper functioning of the pump, seitch it off, but do not touch. Contact our technical assistance for any necessary repairs and insist on the use of original spares. Failure to respect this condition could render the pump unsafe for use.
- When you decide to make no further use of an installed pump is connected must comply with the standards and good practise rule in force in the country under consideration.
- The pump complies with EEC directives No. 89/336 regarding "electromagnetic compatibility" and No. 73/23 regarding "low voltages", and also the subsequent modification No. 93/68.
- Maximum environmental operating temperature: 40° C.

N.B.: **The pump has been constructed in accordance with best practise. Both its life and its electrical and mechanical reliability will be enhanced if it is correctly used and subject to regular maintenance.**

WARNING: **any intervention or repair in the interior of the pump must be carried out by qualified and authorized personnel. The makers decline all responsibility for the consequences of failure to respect this rule.**

8 – Spare parts

As parts we can supply gear motor (different models due to different tensions and flow rate), the complete tube and the hydraulic part as shown in fig. 4 and table 2.

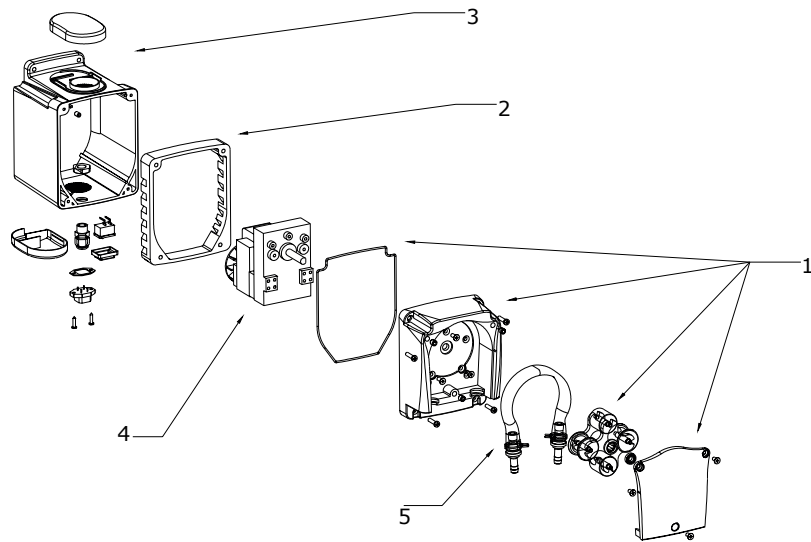


Fig. 4

Pos.	Description	Code				
		22-30 l/h	30 l/h	40 l/h	65 l/h	100 l/h
1	Hydraulic Components	DCA0104001	DCA0104001	DCA0104001	DCA0104001	DCA0104001
2	Spacer				DDI0006701	DDI0006701
3	Head	DCE0104001	DCE0104001	DCE0104001	DCE0104001	DCE0104001
4	Gear Motor	AMO0100101	AMO0100101	AMO0100201	AMO0100301	AMO0100401
5	Santoprene ® Tube	STU0001701	STU0001601	STU0001601	STU0001601	STU0001601
	Silicone Tube	STU0001702	STU0001602	STU0001602	STU0001602	STU0001602

Tab. 2

9 – Overall dimensions

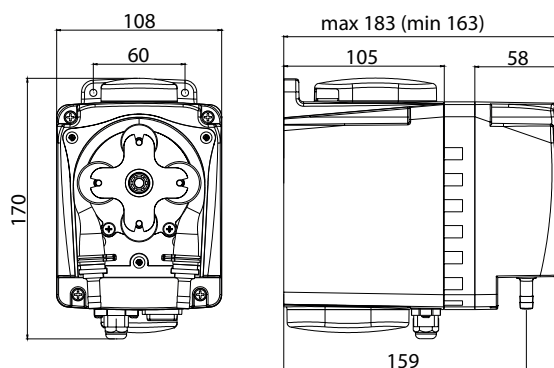


Fig. 5

Guarantee - 1 year (the parts of normal usury are excluded: fittings, nuts, tubes, filter and injection valve). The improper use of the equipment voids the guarantee. All freight charges will be incurred by the Purchaser and not covered under the guarantee.